

UNIVERSAL
LIBRARY

OU_172840

UNIVERSAL
LIBRARY

LONDON
HANDBOOK
for
VISITORS FROM
INDIA
and
BURMA

Published under the authority
of
THE HIGH COMMISSIONER FOR INDIA
India House, Aldwych, London, W.C.2
1938

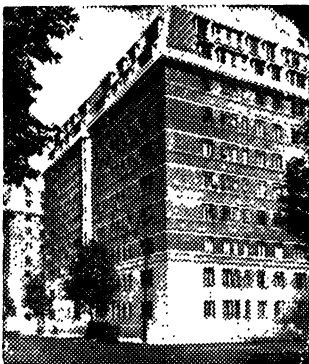
MAKE THE MOST OF YOUR VISIT TO ENGLAND
by securing a

**ONE OR TWO-ROOMED
NEW & COMPLETELY FURNISHED
APARTMENT SUITE**

in the most magnificent and centrally situated
building in London.

**RENTALS $3\frac{1}{2}$ to $6\frac{1}{2}$ GNS.
WEEKLY**

These distinctive newly furnished and beautifully decorated apartment suites have their own luxuriously fitted private bathrooms and kitchenettes, and are fully equipped with linen, cutlery, glassware, crockery, etc. Maid service and valeting arranged.



Wonderful Restaurant - Ballroom for 200 patrons. Modern Cocktail and Snack Bar. Club facilities.

Most moderate prices.

Nell Gwynn House is within easy walking distance of West End shopping centres.

It is situated 2 minutes from buses, and 3 minutes from Underground Stations; within 10 to 15 minutes you can get everywhere worth while in London's West End.

To save disappointment, make your reservation as soon as possible.

NELL GWYNN HOUSE

SLOANE AVENUE, CHELSEA, LONDON, S.W.3, ENGLAND

Cables: VESTIN LONDON

Phone: KENSINGTON 6095

We suggest that you cut out this advertisement and keep it handy for reference.

ENGLAND has been
buying accurate watches
from these showrooms for
generations!

If a list were drawn up of the world's most famous shops it would certainly include the name of J. W. Benson Limited, the well-known London Watchmakers and Jewellers. Visitors to London should make a point of inspecting Benson's Showrooms at the bottom of Ludgate Hill, near St. Paul's Cathedral. The original business was founded not far short of 200 years ago. Probably the true reason why this remarkable firm has survived so many changes, and extended its reputation continually, is that it has remained

for generations under the control of one family who have rigidly adhered to the prudent policy of keeping faith with customers in the matter of *good quality and honest value.*



London's finest display of :
POCKET and WRIST
WATCHES,
GEM RINGS, JEWELLERY,
SILVER PLATE, Etc.

J. W. BENSON, Ltd.

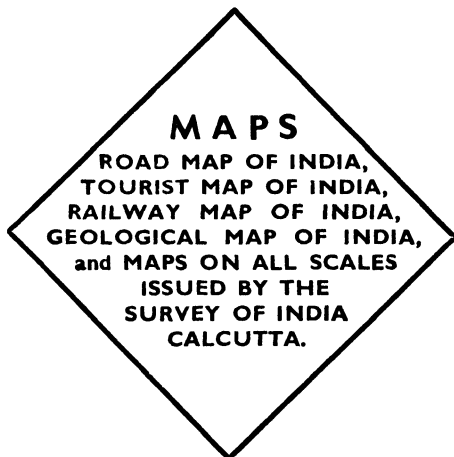
The original firm founded A.D. 1749.

62 & 64, LUDGATE HILL, LONDON, E.C.4.

BENSON TIME IS GREENWICH TIME

INDIAN OFFICIAL PUBLICATIONS & MAPS

RELIABLE AND ACCURATE INFORMATION ON ALL SUBJECTS CONNECTED WITH INDIA WILL BE FOUND IN PUBLICATIONS ISSUED BY THE GOVERNMENT OF INDIA AND ALL LOCAL GOVERNMENTS.



HANDBOOK FOR INDIAN STUDENTS

EIGHTH EDITION, 1938

A guide to the facilities for University and Professional studies and training in the United Kingdom

For further particulars apply:—

IF RESIDENT IN EUROPE OR AMERICA TO:—

The High Commissioner for India,
Public Department, India House, Aldwych, London, W.C.2.

IF RESIDENT IN INDIA TO:—

The Manager of Publications,
Government of India Central Publication Branch, Civil Lines, Delhi.

For MAPS only to:—

The Survey of India, 13 Wood Street, Calcutta.

Telegrams: Auxesis "Piccy."
Telephone: Whitehall 4084

ROOM 22,
CARLTON HOUSE,
11d, REGENT STREET,
(between Piccadilly Circus and Waterloo Place)
LONDON, S.W.1

Come and see me about investing the savings of the past and future. Life Assurance is the only safe method of investing in these days.

A Life Insurance Company is the only form of investment trust which sells its shares by instalments. The shares are delivered fully paid at death, or at an agreed date. The Life Assurance is a very useful by-product of the system.

Do you know to what extent you can and ought to insure your pension?

Write for my October Circular.

Lt.-Col. L. E. HOPKINS,
late R.E., late Chief Engineer, Railway Board,
Insurance Broker (since 1927)



GET IN

TOUCH

WITH

Posted Overseas-

YOUR CAR PROBLEM SOLVED

BY OUR INTER-COUNTRY

CAR EXCHANGE SCHEME!

We can arrange for the car you are now using at home to be traded in against your purchase of a new car for delivery and selection in any Overseas Station.

We can supply you with a car for delivery in this country and eventual export at all-in export price.

Cars purchased through this scheme are serviced throughout the world-wide chain of authorised dealers supported by our many Overseas Manufacturing Divisions

VAUXHALL : BUICK : CHEVROLET : PONTIAC
OLDSMOBILE : CADILLAC : LA SALLE : OPEL

GENERAL MOTORS LTD.

OVERSEAS SALES DEPARTMENT

3, ST JAMES'S SQUARE, LONDON, S.W.1

PHONE: WHITEHALL 3737-8,
GRAMS GENMOTEXPO, PICCY LONDON

EGYPT



INDIA ... CEYLON

FARES	
from Liverpool to	
PORT SAID -	£24
BOMBAY	£40
KARACHI	£41
COLOMBO -	£43
MADRAS -	£45
CALCUTTA -	£45

Special off-season facilities

THE City and Hall Lines offer you the manifold

advantages of ships designed and equipped for Eastern Service, having spacious public rooms, extensive decks, and cabins—all with window or porthole—furnished with every requisite for comfort.

Your voyage will be an enjoyable interlude and you will appreciate the courtesy and intelligent co-operation of a staff trained to your requirements.

ELLERMAN'S CITY & HALL LINES

104—106 LEADENHALL STREET, LONDON, E.C. 3 — Avenue 2424
TOWER BUILDING, LIVERPOOL 75 BOTHWELL STREET, GLASGOW

CONTENTS

	PAGE		PAGE
Air Transport	44	Hotel and other Accom-	
Art Galleries	27	modation	45
Associations and Institutions		India House	13
of Interest	32	Indian Restaurants	44
Banking	45	London, Map of	<i>(Inset)</i>
Exhibitions, etc.	23	„ Sightseeing in	18
Experimental Farms and		London's River	18
Research Institute	46	Lost Property	44
Heart of the Empire, The	18	Maps, Railway and Omnibus	
High Commissioner for India	13	<i>(Pockets in Cover)</i>	
Do. Principal Officers	17	Military Tournaments, etc.	43
		Museums	28

BIBBY LINE

Fast Twin-Screw Oil-Burning Vessels.
FORTNIGHTLY SAILINGS.

GIBRALTAR, MARSEILLES, EGYPT,
SUDAN, COCHIN (Southern India), CEYLON,
BURMA, and STRAITS SETTLEMENTS.

WINTER SUNSHINE TOURS

Ceylon, Burma, Southern India, and
Straits Settlements.

Special low rate 4 months return tickets.

MEDITERRANEAN TOURS

Gibraltar, Marseilles, Egypt, Palestine, Sudan.
Only First Class Passengers carried.

Write for illustrated
Booklet to

BIBBY BROS. & CO

Martins Bank Building,
Water St. LIVERPOOL
22, Pall Mall, LONDON, S.W.1.

Clothes for the Man

On arrival in London, make your first call at Hope Brothers, Regent Street.

In a few minutes you will be able to walk out of this modern Men's Store fully and faultlessly equipped for Town, Country or Evening Wear. You will have the satisfaction of knowing, too, that your clothes conform to the English tradition in craftsmanship, cut and style—yet are, for all that, pleasantly inexpensive.

Everything wearable that a man needs can be had quickly and correctly from Hope Brothers.

Hope Brothers

84-86 Regent Street, W.1.

LTD

44-46 Ludgate Hill, E.C.4.

Branches throughout London and the Provinces.

CONTENTS—*continued*

	PAGE		PAGE
Picture Theatres	31	Sport :—	
Places of Interest in London	19	Athletics	35
„ „ near London	27	Boxing	35
Postal Information...	45	Cricket	35
Public Holidays	44	Dog Racing	39
Rate of Exchange	45	Football	39
Religious Societies and Places of Worship	33	Golf Courses near London	39
Service Dinners	44	Horse Racing	40
		Lawn Tennis	40
		Polo	43
		Speedway Racing	41
		Theatres	29

Recommended

for the best Indian food in LONDON

TAJ-MAHAL RESTAURANT

WEST STREET, CAMBRIDGE CIRCUS, W.C.2

Telephone : Temple Bar 2234

Large and small rooms for private parties. Outside catering a speciality

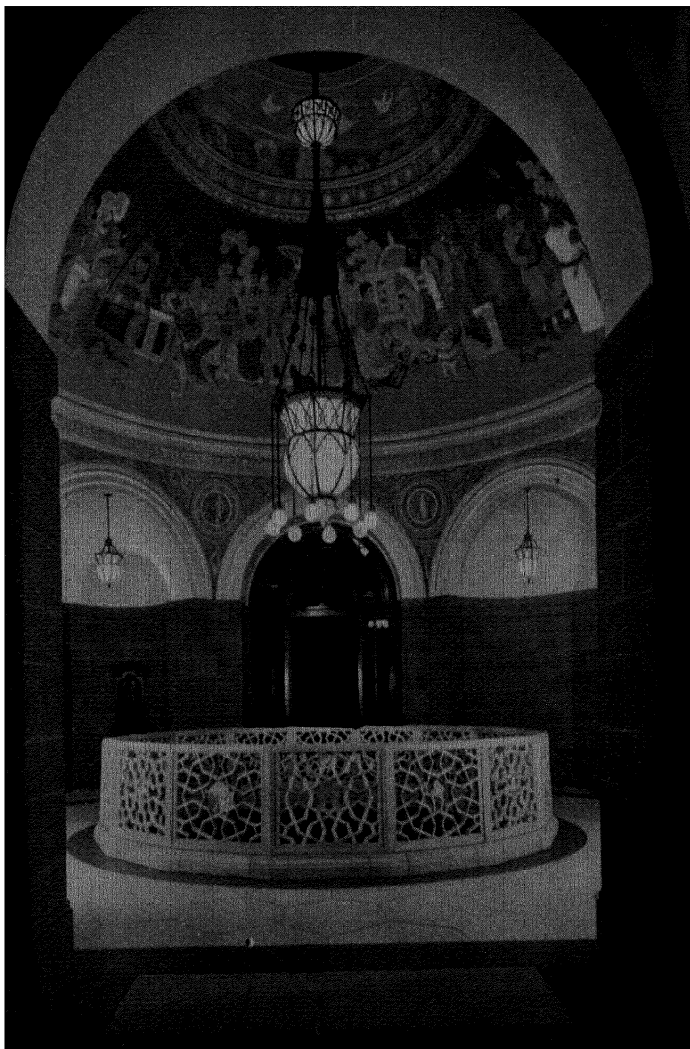
Visit the famous

KOH-I-NOOR (India) RESTAURANT

Finest Indian Curries, Pulaos, Kababs, Sweets, etc.

48, RUPERT STREET, PICCADILLY, LONDON, W.1

Also at 12, ST. JOHN'S STREET, CAMBRIDGE
223, OXFORD ROAD, MANCHESTER



INDIA HOUSE: AN INTERIOR VIEW

INTRODUCTION

The information given in this Handbook deals mainly with those matters which are most likely to prove of general interest to the majority of visitors.

Any details not to be found in the Handbook or advice on any subject, will be gladly given to any who care to apply either by letter addressed to the High Commissioner for India, India House, Aldwych, London, W.C.2, or personally to the Enquiry Officer at India House (Telephone : Temple Bar 8484).

All reasonable care has been taken to ensure that the information contained in this book is correct. London, however, is by no means a static city and the spirit of "change" is as evident here as it is in other parts of the world, therefore the publishers can accept no responsibility in the event of loss or inconvenience occasioned by inaccuracies either in the maps or in the text.

It is intended that this Handbook should be published annually, and suggestions as to future issues or criticisms of the present number are cordially invited. All communications on this subject should be addressed to the Secretary, Public Department, Office of the High Commissioner for India, India House, Aldwych, London, W.C.2.

THE EASTERN BANK LTD

HEAD OFFICE:

**Crosby Square, Bishopsgate
LONDON, E.C.3**

<i>Authorised Capital</i>	£2,000,000
<i>Paid up Capital</i>	£1,000,000
<i>Reserve Fund</i>	£500,000

BRANCHES:

BOMBAY	CALCUTTA	KARACHI
MADRAS	COLOMBO	SINGAPORE
BAGHDAD	BASRA	AMARAH
MOSUL	KIRKUK	BAHRAIN

Conducts all descriptions of Banking
Business with the East

Current Accounts are opened and
Fixed Deposits are received at rates
of Interest which may be ascertained
on application

**EXECUTORSHIPS AND TRUSTEESHIPS
UNDERTAKEN**

HIGH COMMISSIONER FOR INDIA AND INDIA HOUSE

The post of High Commissioner for India in the United Kingdom was created in 1920 in order to take over from the Secretary of State for India certain official work of an agency character. The following have held the post since its creation :—

Sir William S. Meyer, G.C.I.E., K.C.S.I.	1920-22
Sir Dadiba M. Dalal, C.I.E.	1923-24
Sir Atul Chandra Chatterjee, G.C.I.E., K.C.S.I. ...	1925-31
Sir Bhupendra Nath Mitra, K.C.S.I., K.C.I.E., C.B.E.	1931-36
Sir Firozkhan Noon, K.C.I.E.	1936-

The Office of the High Commissioner was first located in two rented houses in Grosvenor Gardens, Victoria, London ; but with the expansion of its activities and responsibilities, the Government of India decided that a permanent and specially designed building suited to the needs of the High Commissioner, and worthy in every respect to rank with other similar establishments in London, should be provided. The India House, which is an imposing edifice, was built according to the designs of Sir Herbert Baker, the eminent architect, at a cost of £324,000. His late Imperial Majesty, King George V, accompanied by Her Imperial Majesty Queen Mary and H.R.H. the Duke of Connaught, declared the building open on the 8th July, 1930.

The exterior of the building had necessarily to conform more or less to the architectural style of adjacent premises, but within these limits every attempt has been made to capture the spirit of India in the architectural designs and compositions. The dignity of the vaulted entrance Hall, the colour and elusive beauty of the mural paintings executed by Indian artists, the warmth of the red sandstone walls and pillars, the gracefully carved lines of the white marble balustrades, the richness of the wood-panellings, all combine to accentuate the essentially Indian atmosphere of the building. Visitors to London should see India House to realise the decorative and utilitarian value of Indian timbers, which have been exclusively used in its construction and appointments. Other Indian materials have also been used wherever possible for constructional and decorative purposes.

India House is open on all weekdays (except Public Holidays) between 10 a.m. and 5 p.m. and on Saturdays between 10 a.m. and 1 p.m. To reach India House the nearest stations and bus routes are as follows :—

●

UNDERGROUND STATIONS.—Aldwych, Strand, Holborn and Temple.

BUS NOS.—1, 6, 9, 11, 13, 15, 60, 68, 77, 77A and 169 to Aldwych. Further details will be found on maps in the pockets.

A brief description of the activities at present carried on at India House may be useful and interesting. They fall under six general departmental headings • Accounts, Education, General, Public, Stores, and Trade.

ACCOUNTS

This Department maintains the official banking accounts, makes all payments on behalf of the High Commissioner, collects all sums due, and exercises financial control over his Office. Civil officers arriving from India and Burma on leave, duty or pension, report to this Department for the payment of their salary or pension. Extensions of leave, medical examinations, commutation of pensions and similar matters are also dealt with as also the payment of civil family pensions. Relief from British income tax on official payments, where admissible, is also arranged, and advice is given in regard to recoveries of income tax in India and Burma. The functions of the High Commissioner as Official Agent to the Administrators-General in India and Burma are also discharged in this Department.

EDUCATION

This Department advises and assists Indian students who come to this country for further study, and, when requested to do so, arranges for their admission to British Universities, Colleges and Educational Institutions generally, or for their practical and professional training in Engineering and Technology and in various professional branches. In addition, the Department is responsible for the various classes of students who come under the official supervision of the High Commissioner, such as, State Scholars, Probationers for Forestry and other services. A woman Educational Officer of the Department is available to advise and assist Indian women students. The Department publishes a "Handbook for Indian Students," which forms a comprehensive guide to the facilities for University and professional studies and training in the United Kingdom. Indian parents or guardians who propose to send their children or wards for further education in this country will find the Handbook of great value.

A list of Boarding Houses, including the names of families receiving paying guests, is kept by the Accommodation Officer, who also makes arrangements for students to be met by a representative of the Department on arrival at the London Termini, provided a timely request for that purpose has been received from the students concerned.

GENERAL

This Department is concerned, among various miscellaneous activities, with the general management and maintenance of the building and offices, the recruitment of staff for the office, for Government and public bodies in India, and with the supervision of Government officers on deputation and study leave. Where necessary it repatriates or otherwise provides for Indian seamen; and looks after the interests of and generally assists Indian nationals as far as practicable. The Department advises enquirers on all matters relating to passports, visas, travelling facilities and the like.

PUBLIC

The Public Department deals with international and inter-Imperial matters and the Conferences and meetings held in various parts of Europe and the United Kingdom at which the High Commissioner represents the Government of India. Amongst these are the regular sessions of the Governing Body of the International Labour Office, Geneva, the Permanent Committee of the International Institute of Agriculture, Rome, and the meetings of the Imperial Economic Committee, the Executive Council of the Imperial Agricultural Bureaux and the Imperial Shipping Committee. The Department is also in charge of the India House Library, which contains an up-to-date collection of books relating to India. In the Reading Room (on the first floor) which is attached to the Library, many Indian newspapers and journals are available for perusal. The Library and the Reading Room are open during official hours, and students and visitors from India are welcome to make free use of them for reference and reading purposes. The sale of Indian official publications and maps in Europe and America is undertaken by the Publications Branch of this Department.

STORES

This Department is housed in its own premises, in Belvedere Road, Lambeth, S.E.1, Telephone : Waterloo 5851. Its functions comprise purchase, inspection and shipment of stores required by the Central and Provincial Governments in India. For this purpose a staff of experts in the various branches of industry is maintained in London and in the provinces, while eminent firms of consulting engineers are retained to advise on particular schemes and problems. The articles dealt with include equipment and munitions of war for the Indian Defence Forces, plant and machinery for hydro-electric and irrigation works, railway rolling stock and materials, and medical and surgical equipment.

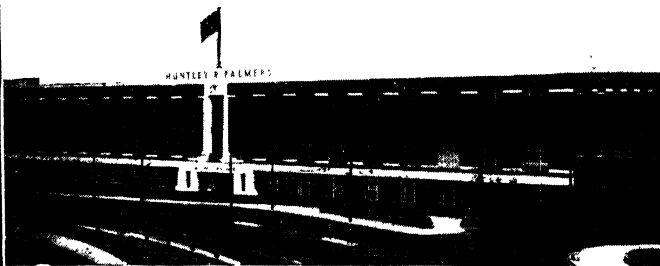
TRADE

The main functions of this Department are concerned with commercial intelligence and publicity in respect of Indian export trade and industry, and include representation of Indian interests on commercial and technical committees. Special Advisers on Timber, Minerals and Shellac are attached to the Department.

The Publicity branch of the Department participates in exhibitions, fairs, and cookery demonstrations. Introductions are given in suitable cases to exporters and producers, and Government Departments in India are advised about the markets in the area under the jurisdiction of this Department. In certain cases the Indian Trade Commissioner, London, assists visitors to his area in securing machinery, etc., required for industrial development in India. Close touch is maintained with the Continental markets through the Indian Government Trade Commissioners at Hamburg and Milan.

Enquiries relating to the export trade of Burma are dealt with by Sir Harry Lindsay, K.C.I.E., C.B.E., Director of the Imperial Institute, South Kensington, S.W.7.

*To
Visitors
from
India*



HUNTLEY & PALMERS

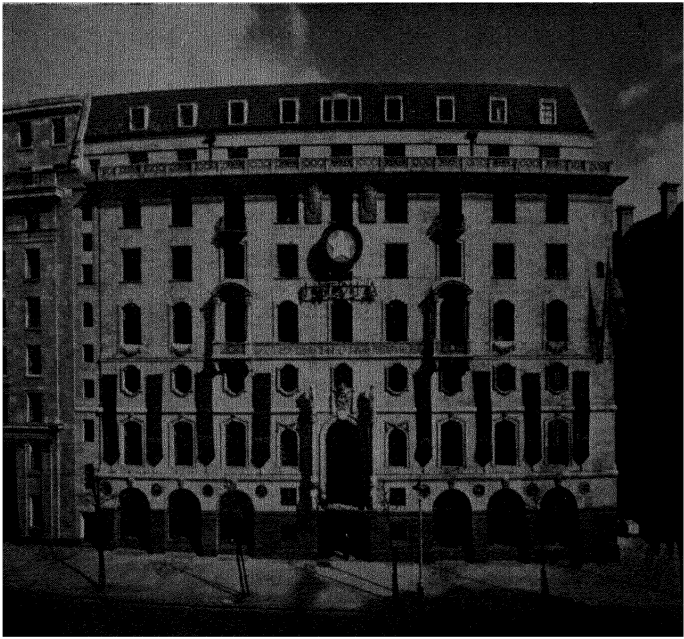
extend a cordial invitation

to visit their

BISCUIT FACTORY

at

Reading



INDIA HOUSE: FRONTAGE TO ALDWYCH

PRINCIPAL OFFICERS

<i>High Commissioner for India</i>	...	Sir FIROZKHAN NOON, K.C.I.E.
<i>Deputy High Commissioner for India</i>		S. LALL, I.C.S., (<i>designate</i>). INAM-UL-MAJID, I.C.S.,
<i>Private Secretary</i>	NASIM HUSAIN (<i>acting</i>)
<i>General Assistant</i>	S. N. DUTT
<i>Enquiry Officer</i>	A. G. VAZIR
<i>Chief Accounting Officer</i>	A. J. C. EDWARDS, F.I.A.
<i>Secretary, Education Department</i>	T. QUAYLE, C.I.E., D.Litt.
<i>Secretary, General Department</i>	R. E. MONTGOMERY
<i>Indian Trade Commissioner, London</i>		Sir DAVID BURNETT MEEK, C.I.E., O.B.E.
<i>Deputy Trade Commissioner, London</i>		M. IKRAMULLAH, I.C.S.
<i>Indian Government Trade Commissioner, Hamburg</i>	H. M. PATEL, I.C.S.
<i>Indian Government Trade Commissioner, Milan</i>	M. R. AHUJA
<i>Director-General, India Store Department</i>	Lt.-Col. Sir S. S. W. PADDON, C.I.E.

THE HEART OF THE EMPIRE

The birth of London as a town is lost in the mists of antiquity. Historians can conjecture : but the best they can give us are assumptions ; and it is not until the Roman occupation that any reliable facts emerge from the swirling clouds of legend and vague probabilities.

It is more than probable that the original fact which accounted for the foundation of the city proper was connected with the Thames. At London Bridge it is about 900 feet wide, being much wider both above and below. That at one time there was a Roman bridge on this spot is practically certain.

After the Roman evacuation London gradually fell into ruins and it was not until King Alfred repaired the walls and gates as a bulwark against the Danes that it once more became a place of importance in the country. Fire, Pestilence and Civil Strife have stalked through its streets, but London has risen above these disasters and stands to-day the greatest metropolis in the world.

The administrative County is now 117 square miles in extent, and contains a population of nearly $4\frac{1}{2}$ millions ; while the area of Greater London is no less than 700 square miles, with a population of just over 8 millions.

LONDON'S RIVER

The Thames, the largest river in England, measures 210 miles from its source in the Cotswold Hills to its outflow into the North Sea. The river is tidal as far as Teddington, 69 miles from its mouth ; and is navigable for sea-going ships to London Bridge.

A steamboat service operates on the Thames during the summer months, and trips may be taken down the river from Westminster Bridge to the Tower Bridge and Greenwich, in order to view the shipping ; from Tower Pier through the Docks ; or up the river to Richmond, Hampton Court and other picturesque reaches, where facilities for boating are available.

SIGHTSEEING IN LONDON

The map appearing between pages 24 and 25 indicates the most interesting sights in London that are to be found between Kensington Palace on the west and the Tower Bridge on the east ; and from the British Museum on the north to Victoria Station on the south. In addition to Underground railways shown on the map, the whole of this district is served by numerous lines of omnibuses, so that it is easy to get expeditiously to any desired point. For the most part the map is self-explanatory ; but it may be noted that the more fashionable shopping centres are in the immediate neighbourhood of Kensington High Street, Brompton Road, Oxford Street, Regent Street, Bond Street, and Piccadilly. A large proportion of the principal theatres are to be found within three-quarters of a mile east and north-east of Piccadilly Circus. Most of the Government offices are situated in Whitehall between the Houses of Parliament and Trafalgar Square.

An excellent means of visiting the principal sights of the Metropolis in a comfortable manner is provided by tourist agencies such as Thos. Cook & Son, Ltd., of Berkeley Street, W.1 (telephone Grosvenor 4000), who arrange motor-coach tours around London which take in all the most interesting places. Parties are accompanied by a guide-lecturer, so that the excursions are both informative and interesting.

The same firm arranges excursions to places of interest near London, such as the Thames Valley, Hampton Court, Windsor and Eton, Oxford University, Canterbury and Rochester, the Shakespeare country, and so on. Further particulars regarding these tours may be obtained from the Head Office of Thos. Cook & Son, Ltd., or from any of their branch establishments.

PLACES OF INTEREST IN LONDON

The nearest railway station (on the Underground system unless otherwise indicated) is given after the name and address in each case.

AUSTRALIA HOUSE, STRAND, W.C.2 (Aldwych).—An imposing building erected 1911-14 by the Commonwealth of Australia as office of the High Commissioner for the Commonwealth.

BANK OF ENGLAND, THREADNEEDLE STREET, E.C.2 (Bank).—(Not open to sightseers.) Founded in 1694. Although a joint stock bank, has always been closely connected with the Government. The original building on the present site was erected mainly from the designs of Sir John Soane (1788). Sir Herbert Baker was the architect of the building recently completed. A "Bank Guard" is furnished every evening by a battalion of His Majesty's Foot Guards.

BELGRAVIA.—A fashionable district of London, west of Buckingham Palace and south of Hyde Park. Includes Belgrave Square and Cadogan Place.

BUCKINGHAM PALACE, ST. JAMES'S PARK, S.W.1 (Hyde Park Corner).—(Not open to the public.) The London residence of the Sovereign since Queen Victoria's accession. Was purchased by George III in 1762 from the Duke of Buckingham; altered by Nash for George IV. Building, grounds and lake cover 40 acres.

BURLINGTON HOUSE, PICCADILLY, W.1 (Green Park).—Occupied by the Royal Academy of Arts (Exhibition open May to August annually); British Academy, Royal, Antiquarian, Astronomical, Linnean, Chemical, and Geological Societies.

CANADA HOUSE, TRAFALGAR SQUARE, S.W.1 (Trafalgar Square).—Large building on the western side of the square. Office of the High Commissioner for the Dominion of Canada.

PLACES OF INTEREST IN LONDON—*continued.*

- CENOTAPH, THE, WHITEHALL, S.W.1 (Westminster).—National Memorial in honour of those members of the British Empire who fell in the Great War. Designed by Sir Edwin Lutyens. Unveiled by His late Imperial Majesty King George V on Armistice Day, 1920.
- CENTRAL CRIMINAL COURT, OLD BAILEY, E.C.4 (Holborn Viaduct, S.R.).—The Great Hall contains fine mural paintings by Sir W. B. Richmond and Professor Gerald Moira. May be viewed on Tuesdays and Fridays from 10 to 4 when sittings of the Court permit. Application to be made to the Keeper.
- CLEOPATRA'S NEEDLE, THAMES EMBANKMENT, E.C. (Charing Cross).—Obelisk originally at Heliopolis about 1500 B.C. Presented to the British nation and erected on Thames-side in 1878. Shows signs of slight damage done by a German bomb during the Great War.
- COUNTY HALL, WESTMINSTER BRIDGE, S.E.1. (Westminster).—Headquarters of the London County Council. Building cost about £4,000,000. Admission free, Saturdays only, 10.30 to 12, and 1.30 to 3.30.
- DOWNING STREET, WHITEHALL, S.W.1 (Westminster).—Named after a politician of Charles II's reign. No. 10 is the official town residence of the Prime Minister.
- GREENWICH, S.E.10.—Metropolitan borough with river frontage of $4\frac{1}{2}$ miles. Includes Greenwich Hospital (since 1873 the Royal Naval College), built on site of an ancient Royal palace. Henry VIII, Queen Mary I and Queen Elizabeth were born in the Royal palace, and Edward VI died there. On a hill in Greenwich Park (188 acres) is Greenwich Observatory, the zero meridian of longitude and of "Greenwich time."
- GUILDHALL, KING STREET, E.C.2 (Bank).—Dates from early 15th century. Offices and Council Chamber of the Corporation of the City of London; Grand Civic Hall, where Sovereigns and Princes are entertained and the great City functions take place. Museum and Art Gallery adjoin. Admission free.
- HORSE GUARDS, WHITEHALL, S.W.1 (Trafalgar Square or Westminster).—Originally the guardhouse of Whitehall Palace. The mounting of the Guard (Life Guards or Royal Horse Guards) at 11 a.m. (10 a.m. on Sundays) and the dismounting at 4 p.m. are picturesque ceremonies. On the King's birthday the colour is "trooped" on the Horse Guards' Parade (300,000 square ft.).
- HOUSES OF PARLIAMENT, WESTMINSTER, S.W.1 (Westminster).—The present building (designed by Sir Charles Barry and Augustus Pugin) was erected 1840-1850 at a cost of more than £2,000,000. Open Saturdays 10 to 3.30, free. Admission to the Strangers' Gallery of the House of Commons on application at India Office, or at the Admission Order Office in St. Stephen's Hall. The clock tower of the House of Commons contains "Big Ben" (weight $13\frac{1}{2}$ tons). When Parliament is sitting a light shines in this tower by night and a Union Jack flies from the Victoria Tower by day.

PLACES OF INTEREST IN LONDON—*continued.*

INNS OF COURT :

THE INNER AND MIDDLE TEMPLE, between Victoria Embankment and Fleet Street, E.C.4 (Temple).—Occupy the site of the buildings of the Order of Knights Templars.

LINCOLN'S INN, Chancery Lane to Lincoln's Inn Fields, W.C.2 (Chancery Lane).—Founded early in the 14th century. Chapel by Inigo Jones (for permission to view apply Chief Porter's Lodge, 10 to 4).

GRAY'S INN, GRAY'S INN ROAD, W.C.1 (Chancery Lane).—Founded late 14th century. Admission free, 10 to 12 and 2.30 to 4, except Saturdays and Sundays.

STAPLE INN, HOLBORN, E.C. (Chancery Lane).—Not now an active Inn, but noteworthy as a relic of Elizabethan London, with its picturesque gabled front and the Old Hall with hammer-beam roof.

KENSINGTON PALACE, W.8 (adjoining Kensington Gardens) (Kensington High Street).—Enlarged by Christopher Wren for William III, and used as a Royal residence until 1760. State apartments are open Saturdays and Sundays from March to October. (March to September 2 to 6; October 2 to 5.)

LLOYD'S, LEADENHALL STREET, E.C.3 (Fenchurch Street, L.M.S.).—Headquarters of ship insurance. Established in Edward Lloyd's coffee house in 1686. New building in Lime Street opened by His late Imperial Majesty King George V in 1928.

LORD'S CRICKET GROUND, ST. JOHN'S WOOD ROAD, N.W.8 (St. John's Wood).—Headquarters of the Marylebone Cricket Club, the governing body of cricket.

MANSION HOUSE, CITY, E.C.4 (Bank).—Official residence of the Lord Mayor. The Egyptian Hall and the Ballroom are the chief features. Admission by order from the Lord Mayor's secretary.

MAYFAIR.—A fashionable district of London, north of Buckingham Palace and east of Hyde Park. Includes Curzon Street, Grosvenor and Berkeley Squares, and the famous shopping centres, Old and New Bond Streets and Oxford Street.

MONUMENT, PUDDING LANE, E.C.3 (Monument).—Built 1671-1677 from designs of Wren, to commemorate the Great Fire of London, which broke out in Pudding Lane in 1666. Splendid views of London are obtained from gallery at top of column. Admission 3d., 9 to 6 (October to April till 4).

PORT OF LONDON.—Comprises the tidal portion of the River Thames from Teddington to the sea, a distance of 69 miles; includes five dock systems covering an area of over 4,000 acres, and the Pool of London. Governing body is the Port of London Authority. Overseas trade of the Port represents one-third of the total for the United Kingdom.

PLACES OF INTEREST IN LONDON—*continued.*

- ROYAL COURTS OF JUSTICE, STRAND, W.C.2 (Aldwych).—Central Hall can be viewed during the Long Vacation.
- ST. JAMES'S PALACE, PALL MALL, S.W.1 (Green Park).—(Not open to the public.) Beautiful Tudor building erected by Henry VIII; the Gatehouse and Presence Chamber remain, and part of the Chapel Royal. A Royal residence from 1698 to 1837. Royal Levées are held here during the season. Representatives of foreign Powers are still accredited to "the Court of St. James's." Changing of the Guard takes place at 10.30 a.m. in the Friary Court when neither the King nor the Queen is in residence at Buckingham Palace.
- ST. PAUL'S CATHEDRAL, CITY OF LONDON, E.C. 4 (Blackfriars or Mansion House).—(1675-1710.) Cost £748,000 to build. The cross on the dome is 365 feet above ground-level. "Whispering" Gallery under the dome. "Great Paul" in S.W. tower weighs 17 tons. Admission to nave and transepts free; to other parts, 6d. or 1s., weekdays only.
- SOUTH AFRICA HOUSE, TRAFALGAR SQUARE, W.C.2 (Trafalgar Square).—Conspicuous building on the east side of the Square. London headquarters of the Union of South Africa.
- TOWER OF LONDON, E.C.3 (Mark Lane).—Built by William the Conqueror. Used at various times in English history as Royal residence, fortress and prison. Amongst illustrious prisoners detained there in past times were: Sir William Wallace, King David II and King James I of Scotland, the "little Princes" (Edward V and his brother), Anne Boleyn, Katherine Howard, Lady Jane Grey, Queen Elizabeth, Sir Walter Raleigh, Cranmer and many others. The Regalia of the Crown are kept there. The Yeomen Warders still retain the picturesque Tudor uniforms. Open weekdays 10 to 6 (Oct. 1 to April 30, 5 p.m.). Admission: Jewel House, 6d.; White Tower and Armouries, 6d.; Bloody Tower, 3d.
- WESTMINSTER ABBEY, S.W.1 (Westminster).—(Built A.D. 1050-1760). Principal features of interest: Chapel of Henry VII, Chapter House and Cloisters; King Edward the Confessor's Shrine; tombs of several English sovereigns; many other monuments and objects of interest, especially the Grave of the Unknown Warrior and Poets' Corner. Open on weekdays at 8 a.m. Admission to Royal Chapels 6d. (Mondays free). Wax effigies, 6d.; Norman undercroft, 3d. Transepts open on Sundays for service only, and Nav only between services.
- WESTMINSTER HALL, S.W.1 (Westminster).—Built by William Rufus (1087-1100), and altered by Richard II (1377-1399); adjacent to and incorporated in the Houses of Parliament. The Hall was originally part of the Palace of Westminster, and survived the fire which destroyed the remainder of the building in 1834. The principal feature is the hammer-beam roof of carved oak. King Charles I was tried in the Hall, and Kings Edward VII and George V lay in state there.

1938 EXHIBITIONS, ETC.

ALEXANDRA PALACE, WOOD GREEN, N.22 (Alexandra Palace, L. & N.E.).—Building stands in 200 acres of beautiful parkland open free to the public daily. Roller-skating rink open daily. Dances in ballroom every Saturday.

Principal Events

Society of Miniature Rifle Clubs' Indoor Bisley	23 April to 30 April
Ladies' Kennel Association Dog Show	12 May
Dance in Winter Garden Ballroom in connection with 30a Universala Kongreso de Esperanto ...	4 August
ALEXANDRA PARK RACES ON—	
Monday, 16 May	Saturday, 11 September
Saturday, 2 July	Saturday, 8 October
Saturday, 30 July	

CRYSTAL PALACE, S.E.19 (Crystal Palace, S.R.).—

National Motor Cycle Festival ...	14 May
International Composite Meeting	21 May
International Car Race	25 June
International Composite Meeting	13 August
International Motor Cycle Race ...	10 September
International Car Race	8 October

MADAME TUSSAUD'S WAXWORK EXHIBITION, MARYLEBONE ROAD, N.W.1 (Baker Street).—Reopened after fire, 1928. Open daily (including Sunday), 10 a.m. to 10 p.m. Admission 1s. 6d. (children under 12.) 6d.

OLYMPIA, ADDISON ROAD, W.14 (Addison Road).—Exhibitions, etc., during 1938 (tentative dates):—

Great Joint Terrier Club Show ...	10 May
Big Breeds Dog Show	11 May
Royal Tournament	19 May to 4 June
International Horse Show	16 to 25 June
Building Trades Exhibition ...	16 Sept. to 5 Oct.
National Dairy Show	11 Oct. to 14 Oct.
Woman's Fair and Exhibition ...	2 to 26 Nov.
Kennel Club Show	7 and 8 Dec.

ROYAL AGRICULTURAL HALL, UPPER STREET, ISLINGTON, N.1 (Angel).—Principal Shows, etc., during the year 1938:—

Used Motor Show... ..	30 April to 14 May
Bakers' and Confectioners' Exhibition	3 Sept. to 9 Sept.
Smithfield Club Cattle Show ...	5 Dec. to 9 Dec.
World's Fair and Circus	19 Dec. to 21 Jan. 1939

[continued on page 26



TO INDIA AND THE FAR EAST —quickly, luxuriously—by Lloyd Triestino

Every year thousands of passengers travel to the East via Lloyd Triestino. To them the superlative cuisine, luxurious surroundings and exceptional service are matters always to be remembered. The "Conte Biancamano," "Conte Verde," "Conte Rosso," "Victoria," have created an unequalled express service. Remember, Italy is the natural gateway to the East—by embarking there your journey is made doubly interesting and time is saved. All baggage arrangements from London are organised by the Company . . . Apply to your Travel Agent or

Italian Lines

14, (Lower) Regent Street, S.W.1.

Tel. Whitehall 8801.



H O L B O R N

R E S T A U R A N T

(CORNER OF KINGSWAY, LONDON)

LUNCHEON	4/6
DINNER	7/6
GALA DINNER (SATS.)	8/6
SUPPER	6/-

or à la Carte at reasonable prices

GRAND GRILL ROOM

DANCING
AND
CABARET

FRASCATI'S

OXFORD STREET, W.1

LONDON'S FLORAL RESTAURANT

LUNCHEON	4/6
DINNER	7/6 and 10/6
SUPPER	5/-

or à la Carte at moderate prices

DANCING

SURPRISE ENTERTAINMENT ITEMS
DURING THE EVENING

1938 EXHIBITIONS, ETC.—*continued from page 23.*

ROYAL BOTANIC GARDENS, KEW (Kew Gardens).—Open daily. Admission Tuesdays and Fridays, 6d. ; other days 1d. 10 a.m. to sunset.

ROYAL HORTICULTURAL SOCIETY, VINCENT SQUARE, S.W.1 (St. James's Park or Victoria).—Holds fortnightly exhibitions at Vincent Square and a Spring Show at the Royal Hospital Gardens, Chelsea, in May. Some of the principal fixtures for 1938 are as under :—

Daffodil Show (New Hall) and Early Market Produce (Old Hall)	12 and 13 April
British Carnation Soc. Show (New Hall)	20 and 21 April
Rhododendron Assoc. Show (New Hall)	3 and 4 May
Chelsea Show (see special announce- ment)	25, 26, 27 May
Nat. Sweet Pea Soc. Show (Old Hall)	5 July
Nat. Carnation and Picotee Soc. Show (Old Hall)	12 and 13 July
Nat. Dahlia Soc. Show (New Hall) and Alpine Garden Soc. Show (Old Hall)	6 and 7 September
Nat. Rose Society's Show (New and Old Halls)	9 and 10 September

ZOOLOGICAL GARDENS, REGENT'S PARK, N.W.8 (Regent's Park).—Admission weekdays 9 a.m. to sunset, Mondays, 6d.; other weekdays, 1s. Children under 14, 6d. On Sundays admission only by member's ticket.

EMPIRE EXHIBITION, SCOTLAND, 1938

EMPIRE EXHIBITION, SCOTLAND, 1938.—The greatest exhibition event in Great Britain in 1938 will be, of course, the Empire Exhibition at Bellahouston Park, Glasgow.

Canada, Australia, New Zealand and South Africa will all have their own Pavilions. The Irish Free State will be there, the Colonies, the home country ; whilst Scotland, as the Home of the Exhibition, will have her separate Section, with two pavilions. There will be a Palace of Engineering, a Palace of Industry, and a Palace of Fashion. A score of restaurants, bandstands, a Concert Hall, and a twenty-four acre Amusement Park will cater for the pleasure of visitors.

ART GALLERIES

GUILDHALL ART GALLERY, KING STREET, E.C.2 (Bank).—Contains the collection of the Corporation of the City of London. Open daily 10 to 5, free (Oct. to Feb., 10 to 4).

NATIONAL GALLERY, TRAFALGAR SQUARE, S.W. (Trafalgar Square).—Open 10 to 8 Monday, Tuesday and Wednesday; 10 to 5 Thursday, Friday and Saturday; 2 to 5 Sunday. Paying 'days, Thursday and Friday (6d.). Other days free.

NATIONAL PORTRAIT GALLERY, ST. MARTIN'S PLACE (adjoining National Gallery).—Contains collection of portraits of eminent men and women associated with our national history. Open free Monday, Tuesday, Wednesday and Saturday 10 to 5 or 6 according to season; Thursday and Friday 10 to 4 or 5, 6d.; Sunday 2.30 to 6, free.

ROYAL ACADEMY OF ARTS, BURLINGTON HOUSE, PICCADILLY, W.1 (Green Park).—Open from first Monday in May to first week in August. Weekdays only, 9 to 7. Admission 1s. 6d. Catalogue 1s. Exhibition of works by old masters, British and foreign artists, 8 weeks from 1st week of January, 10 to 5; Admission 1s. 6d. Catalogue 1s. Gibson and Diploma Galleries free daily (not Sundays), 11 to 4. Catalogue 1s.

TATE GALLERY, MILLBANK, S.W.1 (Vauxhall, S.R.).—Presented to the Nation, with the nucleus of a collection of pictures, by the late Sir Henry Tate. Contains the bulk of the Turner and Watt collections and the pictures purchased annually under the Chantrey Bequest. Open 10 to 8 Monday, Tuesday and Wednesday, 10 to 5 Thursday, Friday and Saturday, 2 to 5 Sunday. Paying days: Tuesday and Wednesday (6d.). Other days free.

WALLACE COLLECTION, HERTFORD HOUSE, MANCHESTER SQUARE, W.1 (Bond Street).—Contains one of the finest collections of pictures, Sèvres porcelain, and armour in the world. Open weekdays 10 to 5; Sunday 2 to 5. Admission, Tuesday and Friday, 6d.; other days free. Official lectures daily (except Wednesday) 3 p.m. and Saturday at 12 noon.

PLACES OF INTEREST NEAR LONDON.

OXFORD.—(60 minutes by rail from London). * Renowned University City with many magnificent buildings and delightful gardens, most of which are open to the public daily. Famous as centre of learning since 12th Century. Oxford is situated at the confluence of the Rivers Thames and Cherwell in a quiet pastoral countryside between the Chiltern and Cotswold Hills. Apart from sight-seeing there are unusual facilities for all kinds of outdoor sport. The famous "Eights Week" is held from May 19th to 26th.

MUSEUMS

BRITISH MUSEUM, GREAT RUSSELL STREET, W.C.1 (British Museum).

—Contains all kinds of rare exhibits illustrating the history of the world—manuscripts, china, sculpture and printed books, prints and drawings of every age and race. Open weekdays, 10 to 6; Sundays, 2 to 6; free. Lecture tours daily at 12 and 3.

IMPERIAL WAR MUSEUM, LAMBETH ROAD, S.E.1 (Lambeth North).—

Comprehensive series of exhibits relating to the Great War. Open 10 to dusk weekdays, 2 to dusk Sundays. Free.

LONDON MUSEUM, LANCASTER HOUSE, ST. JAMES'S, S.W.1 (Green

Park).—Instituted for the conservation of antiquities and other objects associated with the history of London. Open weekdays 10 to 6; Sundays 2 to 6. Closes at 4 p.m. Nov. 1 to March 31. Admission, Tuesdays, Wednesdays and Thursdays, 6d.; other days free.

MUSEUM OF PRACTICAL GEOLOGY, EXHIBITION ROAD, SOUTH KEN-

SINGTON, S.W.7 (S. Kensington).—Specimens of ores, stones, glass and models of famous diamonds. Open free on weekdays 10 to 6; Sundays 2.30 to 6.

NATURAL HISTORY MUSEUM, CROMWELL ROAD, SOUTH KENSING-

TON, S.W.7 (South Kensington).—The finest museum of its kind in the world, containing zoological, fossil, mineral and botanical collections. Admission free. Open daily 10 to 6; Sundays 2.30 to 6.

ROYAL UNITED SERVICE MUSEUM, BANQUETING HALL, WHITEHALL,

S.W.1 (Trafalgar Square).—Contains historic naval and military relics; models of Trafalgar and Waterloo, etc. Open 10 to 5. Admission, 1s. weekdays; after noon Wednesdays and Saturdays, 6d.

SCIENCE MUSEUM, EXHIBITION ROAD, SOUTH KENSINGTON, S.W.7

(South Kensington).—Collections illustrate the application of science to industry, and the development of scientific and industrial instruments, apparatus and machinery. Admission free Mondays, Tuesdays and Wednesdays, 10 to 6; Thursdays, Fridays and Saturdays, 10 to 8; Sundays, 2.30 to 6.

SIR JOHN SOANE'S MUSEUM, 13 LINCOLN'S INN FIELDS, W.C.2

(Holborn).—House of the famous architect Sir John Soane, containing valuable collections of antiquarian and architectural treasures; pictures by Hogarth, Watteau, Reynolds, Turner and other noted artists. Open Tuesday to Friday, 10.30 to 5, free.

VICTORIA AND ALBERT MUSEUM, SOUTH KENSINGTON, S.W.7 (South

Kensington).—Illustrates arts and crafts of all ages. Open Mondays, Tuesdays and Wednesdays, 10 to 6; Thursdays, Fridays and Saturdays, 10 to 8; Sundays, 2.30 to 6; free.

INDIAN SECTION, IMPERIAL INSTITUTE ROAD.—Collections illustrative of industries and arts in the Indian Empire. Open free, same hours as above.

THEATRES

<i>Name.</i>	<i>Telephone.</i>	<i>Address.</i>	<i>Station.</i>
ADELPHI -	- <i>Tem. Bar 7611</i>	Strand	Strand
ALDWYCH -	- <i>Tem. Bar 6404</i>	Aldwych	Aldwych
AMBASSADORS -	- <i>Tem. Bar 1171</i>	West St.	Leicester Sq.
APOLLO -	- <i>Gerrard 2663</i>	Shaftesbury Av.	Piccadilly
CAMBRIDGE -	- <i>Tem. Bar 6056</i>	Cambridge Cir.	Leicester Sq.
COLISEUM -	- <i>Tem. Bar 3161</i>	St. Martin's Lane, W.C.2	Trafalgar Sq.
COMEDY -	- <i>Whitehall 2578</i>	Panton St.	Piccadilly
CRITERION -	- <i>Whitehall 3844</i>	Piccadilly	Piccadilly
DRURY LANE -	- <i>Tem. Bar 7171</i>	Catherine St.	Covent Gdn.
DUCHESS -	- <i>Tem. Bar 8243</i>	Catherine St.	Aldwych
DUKE OF YORK'S	<i>Tem. Bar 5122</i>	St. Martin's Lane	Leicester Sq.
EMBASSY -	- <i>Primrose 2211</i>	Eton Av., N.W.3	Swiss Cottage
FORTUNE -	- <i>Tem. Bar 7373</i>	Russell St. W.C.2	Covent Gdn.
GAIETY -	- <i>Tem. Bar 6991</i>	Strand	Aldwych
GARRICK -	- <i>Tem. Bar 4601</i>	Charing Cross Rd.	Trafalgar Sq.
GLOBE -	- <i>Gerrard 1592</i>	Shaftesbury Av.	Piccadilly
HAYMARKET -	- <i>Whitehall 9832</i>	Haymarket	Piccadilly
HIPPODROME -	- <i>Gerrard 3272</i>	Cranbourn St.	Leicester Sq.
HIS MAJESTY'S -	- <i>Gerrard 6606</i>	Haymarket	Piccadilly
HOLBORN EMPIRE	<i>Holborn 5367</i>	High Holborn, W.C.1	Holborn
KINGSWAY -	- <i>Holborn 4032</i>	Gt. Queen St.	Holborn
LITTLE -	- <i>Tem. Bar 6501</i>	John St.	Charing Cross
LONDON PAVILION	<i>Gerrard 2982</i>	Piccadilly Cir.	Piccadilly
LYCEUM -	- <i>Tem. Bar 3612</i>	Wellington St.	Aldwych
LYRIC -	- <i>Gerrard 3686</i>	Shaftesbury Av.	Piccadilly
MERCURY -	- <i>Park 5700</i>	Notting Hill Gate	Notting Hill Gate
NEW -	- <i>Tem. Bar 3878</i>	St. Martin's Lane	Leicester Sq.
" OLD VIC "	- <i>Waterloo 6336</i>	Waterloo Rd.	Waterloo
PALACE -	- <i>Gerrard 6834</i>	Cambridge Cir.	Leicester Sq.
PALLADIUM -	- <i>Gerrard 7373</i>	Argyll St., W.1	Oxford Cir.
PHOENIX -	- <i>Tem. Bar 8611</i>	Charing Cross Rd.	Leicester Sq.
PICCADILLY -	- <i>Gerrard 4506</i>	Denman St.	Piccadilly
PLAYHOUSE -	- <i>Whitehall 7774</i>	Charing Cross	Charing Cross
PRINCE OF WALES	<i>Whitehall 8681</i>	Coventry St.	Piccadilly
PRINCE'S -	- <i>Tem. Bar 6506</i>	Shaftesbury Av.	British Mus.

THEATRES—continued.

Name.	Telephone.	Address.	Station.
QUEEN'S -	Gerrard 4517	Shaftesbury Av.	Piccadilly
ROYAL OPERA HOUSE	Tem. Bar 7961	Covent Gdn.	Covent Gdn.
ROYALTY -	Gerrard 7331	Dean St.	Piccadilly
SADLER'S WELLS	Terminus 1672	Rosebery Av.	Angel
ST. JAMES'S	Whitehall 3903	King St.	Green Park
ST. MARTIN'S	Tem. Bar 1443	West St.	Leicester Sq.
SAVILLE -	Tem. Bar 4011	Shaftesbury Av.	Leicester Sq.
SAVOY -	Tem. Bar 8888	Strand	Strand
SCALA -	Museum 6010	Charlotte St. W.1	Goodge St.
SHAFTESBURY	Gerrard 6666	Shaftesbury Av.	Leicester Sq.
STRAND -	Tem. Bar 4143	Aldwych	Aldwych
VAUDEVILLE	Tem. Bar 4871	Strand	Strand
VICTORIA PALACE	Victoria 1317	Victoria St.	Victoria
WESTMINSTER	Victoria 0283	Palace St., S.W.1	Victoria
WHITEHALL	Whitehall 8011	Whitehall	Charing Cross
WINDMILL	Gerrard 7413	Gt. Windmill St.	Piccadilly
WINTER GARDEN	Holborn 8881	Drury Lane	Covent Gdn.
WYNDHAM'S	Tem. Bar 3028	Charing Cross Rd.	Leicester Sq.

The Finest Coachwork in the World

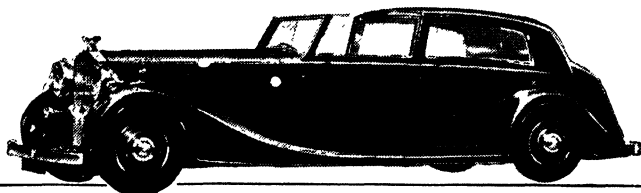
for

ROLLS-ROYCE and BENTLEY

is designed by

Jack BARCLAY Ltd.

12/15 ST. GEORGE STREET, HANOVER SQUARE, LONDON



LONDON'S LARGEST DISPLAY of ROLLS-ROYCE and BENTLEY

PICTURE THEATRES

<i>Name.</i>	<i>Telephone.</i>	<i>Address.</i>	<i>Station.</i>
ACADEMY -	- <i>Gerrard 2981</i>	Oxford St.	Oxford Cir.
ASTORIA -	- <i>Gerrard 5528</i>	Charing Cross Rd.	Tottenham Court Rd.
CARLTON -	- <i>Whitehall 3711</i>	Haymarket	Piccadilly
COURT -	- <i>Sloane 0058</i>	Sloane Sq.	Sloane Sq.
CURZON -	- <i>Grosvenor 4100</i>	Curzon St.	Green Park
DOMINION	- <i>Museum 2176</i>	Tottenham Court Rd.	Tottenham Court Rd.
EMPIRE -	- <i>Gerrard 1234</i>	Leicester Sq.	Leicester Sq.
FORUM -	- <i>Tem. Bar 3931</i>	Villiers St.	Strand
LEICESTER SQ.	- <i>Whitehall 5252</i>	Leicester Sq.	Leicester Sq.
LONDON PAVILION	<i>Gerrard 2982</i>	Piccadilly Cir.	Piccadilly
MAJESTIC -	- <i>Museum 7181</i>	Tottenham Court Rd.	Tottenham Court Rd.
MARBLE ARCH PAVILION	<i>Mayfair 5113</i>	Oxford St.	Marble Arch
METROPOLE -	- <i>Victoria 4673</i>	Victoria	Victoria
NEW GALLERY KINEMA	<i>Regent 2255</i>	Regent St.	Piccadilly
NEW VICTORIA -	- <i>Victoria 2544</i>	Victoria	Victoria
PLAZA -	- <i>Whitehall 8944</i>	Lower Regent St.	Piccadilly
POLYTECHNIC -	- <i>Langham 1744</i>	Regent St.	Oxford Cir.
REGAL -	- <i>Padd. 8011</i>	Marble Arch	Marble Arch
RIALTO -	- <i>Gerrard 3488</i>	Coventry St.	Piccadilly
STOLL PICTURE THEATRE	<i>Holborn 3703</i>	Kingsway	Holborn
TIVOLI -	- <i>Tem. Bar 5625</i>	Strand	Strand
TUSSAUD'S -	- <i>Welbeck 8661</i>	Baker St.	Baker St.

ASSOCIATIONS AND INSTITUTIONS OF INTEREST

*Names within brackets marked thus * indicate the nearest Tube or Underground Railway Stations.*

- ANGLO-INDIAN ASSOCIATION, LONDON.—6 Coolhurst Road, N.8 (Highgate, L. & N.E.)*.
- AUTOMOBILE ASSOCIATION.—Fanum House, New Coventry Street, W.1 (Leicester Square)*. *Tel.*: WHItchall 1200.
- BRITISH EMPIRE PRODUCERS' ORGANISATION.—22 Queen Anne's Gate, S.W.1 (Westminster)*. *Tel.*: WHItchall 3387.
- BRITISH EMPIRE SERVICE LEAGUE.—Empire House, King Street, Baker Street, W.1 (Baker Street)*. *Tel.*: WELbeck 7453.
- CHIEF PUNJAB ASSOCIATION.—445 Strand, W.C.2 (Trafalgar Square)*.
- EAST AND WEST FRIENDSHIP COUNCIL.—32 Russell Square, London, W.C.1 (Russell Square)*. *Tel.*: MUSEum 0328.
- EAST INDIA ASSOCIATION.—3 Victoria Street, S.W.1 (Westminster)*. *Tel.* ABBey 2161.
- EMPIRE PARLIAMENTARY ASSOCIATION (for M.L.A.'s and M.L.C.'s only), Westminster Hall, S.W.1 (Westminster)*.
- ENGLISH-SPEAKING UNION.—37 Charles Street, W.1 (Piccadilly)*. *Tel.* MAYfair 7400.
- HINDUSTANI SPEAKING UNION.—454 Uxbridge Road, W.12
- IMPERIAL INSTITUTE.—South Kensington, S.W.7 (South Kensington)*. *Tel.*: KENSington 3264.
- INDIA SOCIETY.—3 Victoria Street, S.W.1 (Westminster)*. *Tel.*: ABBey 2161.
- INDIAN CHAMBER OF COMMERCE IN GREAT BRITAIN.—11A Wormwood Street, E.C.2 (Liverpool Street)*. *Tel.*: NATional 4389.
- INDIAN GYMKHANA CLUB.—Thornbury Avenue, Isleworth (Osterley and Spring Grove)*. *Tel.*: HOUnslow 2476.
- INDIAN SOCIAL SERVICE GROUP.—36 Well Walk, Hampstead, N.W.3 (Hampstead Heath)*.
- INDIAN STUDENTS' UNION AND HOSTEL.—112 Gower Street, W.C.1 (Warren Street and Euston Square)*. *Tel.*: EUSton 4004.
- INDIAN TEA ASSOCIATION (LONDON).—21 Mincing Lane, E.C.3 (Fenchurch Street, L.N.S.)*. *Tel.*: MANSion House 1477.
- INDIAN VILLAGE WELFARE ASSOCIATION.—4 Great Smith Street, S.W.1 (Westminster)*.
- NATIONAL INDIAN ASSOCIATION.—10 Sussex Mansions, Sussex Place, S.W.7 (South Kensington)*.
- NEW BURMA CLUB.—101 Great Russell Street, W.C.1 (Russell Square)*.

ASSOCIATIONS AND INSTITUTIONS OF INTEREST—*continued*.

- NORTHBROOK SOCIETY.—Imperial Institute, Exhibition Road, South Kensington, S.W.7 (South Kensington)*.
- OVERSEAS LEAGUE.—Overseas House, St. James's, S.W.1 (Green Park)*. *Tel.* REGent 5051.
- ROYAL ASIATIC SOCIETY.—74 Grosvenor Street, W.1 (Bond Street)*. *Tel.* MAYfair 5530.
- ROYAL AUTOMOBILE CLUB.—Pall Mall, S.W.1 (Piccadilly)*. *Tel.*: WHItchall 2345.
- ROYAL EMPIRE SOCIETY.—Northumberland Avenue, W.C.2 (Charing Cross)*. *Tel.* WHItchall 6733.
- INDIAN WOMEN'S EDUCATIONAL ASSOCIATION.—Northbrook Rooms, Imperial Institute, Exhibition Road, South Kensington, S.W.7 (South Kensington)*.
- ROYAL INSTITUTE OF INTERNATIONAL AFFAIRS.—Chatham House, 10 St. James's Square, S.W.1 (Piccadilly)*. *Tel.* WHItchall 2233.
- ROYAL SOCIETY OF ARTS.—18 John Street, W.C.2 (Charing Cross)*.
- SISTERHOOD OF THE EAST.—63 Newlands Park, Sydenham, S.E.26.
- VICTORIA LEAGUE.—81 Cromwell Road, S.W.7 (Gloucester Road)*. *Tel.* FRObisher 3584.

PLACES OF WORSHIP AND RELIGIOUS SOCIETIES

*Names within brackets marked thus * indicate the nearest Tube or Underground Railway Stations.*

- BUDDHIST.—THE BRITISH MAHA BODHI SOCIETY.—41 Gloucester Road, Regent's Park, N.W.1 (Chalk Farm)*.
- CHRISTIAN.—Various denominational churches, chapels, etc., in every district of London.
- HINDU.—HINDU ASSOCIATION OF EUROPE.—30 Belsize Park, Hampstead, N.W.3 (Belsize Park)*.
- MUSLIM SOCIETY IN GREAT BRITAIN.—18 Eccleston Square, Victoria, S.W.1 (Victoria)*.
- MUSLIM.—THE LONDON MOSQUE.—63 Melrose Road, S.W.18 (Southfields, S.R.)*.
- PARSEE ASSOCIATION OF EUROPE.—11 Russell Road, Kensington, W.14 (Addison Road)*.
- SHAH JEHAN MOSQUE.—Woking, Surrey (Woking, S.R.)*.
- SIKH.—BHUPENDRA DHARMASALA—KHALSA JATHA (BRITISH ISLES).—79 Sinclair Road, W.14 (Addison Road)*.
- THEOSOPHICAL SOCIETY IN ENGLAND.—50 Gloucester Place, W.1 (Baker Street)*.

OXFORD

—Only 1 HOUR BY RAIL from *LONDON

This historic University City, with its world-famous buildings, charming gardens and delightful countryside, is well worth an extended visit. It is, moreover, an ideal centre for touring by road, rail and river (a journey down the Thames by steamer is an unforgettable experience). The Cotswolds, the Chilterns, Windsor, and the Shakespeare country are within easy reach. There are unusual facilities for Riding, Hunting, Cricket, Tennis, Golf, etc.; Theatres, Cinemas, Music. There is always something to see or do in Oxford.

*Special Cheap
Day and Period
Tickets by Rail
and Road.

Illustrated Handbook Free

from Room J, Official Information Bureau,
16, CORNMARKEt, OXFORD.



LAWN & ALDER LIMITED

HOME AND COLONIAL OUTFITTERS
MERCHANTS AND SHIPPERS

Since 1896 we have specialised in supplying EVERY NEED of the residents and visitors to the Dominions & Colonies. We know that our intelligent service can solve your most difficult problems, our keen prices and quality values lighten your purchasing costs.

Favour us with a visit or an enquiry so that we may explain fully how we "Mother" many thousands of appreciative clients in all parts of the Globe.

Correspondence receives individual attention. It is our Business to see that the Overseas Customer is a satisfied and confident purchaser.

22 & 24, Kirby St., Hatton Garden, London, E. C. 1

Telegraphic Address
"Unprovided Smith London."

Telephone
Holborn 1448 (2 lines).

Cable Address
"Unprovided London."

A.B.C. Code 5th Edition.

SPORT

ATHLETICS

The fine track at the White City, Shepherd's Bush, W. (nearest station Wood Lane), is the venue of the principal athletic meetings held during the London season. The Amateur Athletic Association Championships for 1938, open to competitors of any nationality, will be held on this track Friday and Saturday, July 15th and 16th.

A list of London events is given below :—

L.A.C. Public Schools Championships, White City	8 and 9 April
A.A.A. Indoor Championships, Wembley ...	16 April
A.A.A. 7 Miles Walk and 10 Miles Flat Championships, White City	23 April
British Games and Inter-Counties Championships, White City (Whit Monday)	6 June
A.A.A. "A" Team v. U.L.A.C., Motspur Park	15 June
A.A.A. Southern Junior Championships, Tooting	18 June
Polytechnic Kinnaird Trophy Meeting, Chiswick	18 June
A.A.A. Junior Championships, White City ...	9 July
A.A.A. General Championships, White City ...	15 and 16 July
A.A.A. "A" Team v. M.P.A.A., Imber Court	18 July
Oxford & Cambridge v. Princeton & Cornell, White City	23 July
International Meeting, White City (Bank Holiday)	1 August
Gt. Britain v. France, White City	13 August

BOXING

Contests are held periodically at the Stadium Club, 85 High Holborn, W.C.1 (Holborn); the Ring, Blackfriars Road, S.E.1 (Blackfriars), etc. Special shows (international contests, amateur championships, etc.) take place occasionally at the Royal Albert Hall, Kensington, W. (South Kensington); Wembley Stadium (Wembley); and (under the auspices of the National Sporting Club) at the Empress Theatre, Earl's Court, S.W. (Earl's Court). The 1938 Amateur Championships will be held at the Royal Albert Hall on April 6.

CRICKET

First-class matches are played in London from May to September at the following cricket grounds :—

LORD'S, N.W. (St. John's Wood).—Lord's is the headquarters of Marylebone Cricket Club (the ruling body in English cricket), also of the Middlesex County C.C.



Travel

in comfort . . . free from sea-sickness, air-sickness, rail-sickness. Rely on "Airsea" and enjoy the delights of travel to the full.



"Airsea" is the reliable Travel-sickness remedy which can be taken by young and old without danger—without fear of unpleasant after effects.

FROM ALL
CHEMISTS
TWO SIZES
4/- and 7/6



**WITHOUT FEAR OF
Sickness!**



ANTIDOTE FOR SEA,
AIR and RAIL SICKNESS



Write for illustrated literature, press opinions, testimonials, etc.—post free from

Thos. Christy & Co.
Ltd., 6-12, Old Swan
Lane, London, E.C.4

ARTISTIC CATERING

at reasonable prices

BALL SUPPERS : WEDDING
RECEPTIONS : BANQUETS
LUNCHEONS : DINNERS
COMING-OF-AGE FESTIVITIES

MAYFAIR CATERING CO. LTD.

34 NORTH ROW, PARK LANE, LONDON, W.1

MAYFAIR 0175 (4 lines)

SPORT—*continued.*

MATCHES AT LORD'S, 1938

<i>April</i>		
Sat.	30th	M.C.C. v. Yorkshire 3 days
<i>May</i>		
Wed.	4th	M.C.C. v. Surrey 3 days
Sat.	7th	Middlesex v. Warwickshire 3 days
Wed.	11th	Middlesex v. Gloucestershire 3 days
Sat.	14th	M.C.C. v. Australians 3 days
Wed.	18th	Middlesex v. Lancashire 3 days
Sat.	21st	Middlesex v. Nottinghamshire 3 days
Wed.	25th	Middlesex v. Worcestershire 3 days
Sat.	28th	Middlesex v. Australians 3 days
<i>June</i>		
Wed.	1st	England v. The Rest 3 days
Sat.	4th	Middlesex v. Sussex 3 days
Wed.	8th	Middlesex v. Hampshire 3 days
Sat.	11th	Beaumont v. Oratory 1 day
Tues.	14th	M.C.C. v. Lords & Commons 1 day
Wed.	15th	Gentlemen of England v. Australians 3 days
Sat.	18th	M.C.C. v. Oxford University 3 days
Fri.	24th	England v. Australia 4 days
Wed.	29th	M.C.C. v. Cambridge University 2 days
<i>July</i>		
Sat.	2nd	Oxford v. Cambridge 3 days
Fri.	8th	Eton v. Harrow 2 days
Mon.	11th	Royal Artillery v. Royal Engineers 2 days
Wed.	13th	Gentlemen v. Players 3 days
Sat.	16th	Middlesex v. Yorkshire 3 days
Wed.	20th	London Clergy v. Southwark Clergy 1 day
Fri.	22nd	Royal Navy v. The Army 2 days
Mon.	25th	Clifton v. Tonbridge 2 days
Wed.	27th	Rugby v. Marlborough 2 days
Fri.	29th	Cheltenham v. Haileybury 2 days
<i>August</i>		
Mon.	1st	Lord's Schools v. The Rest 2 days
Wed.	3rd	The Army v. The Public Schools 2 days
Fri.	5th	Young Amateurs v. Young Professionals 2 days
Wed.	10th	Middlesex v. Kent 3 days
Sat.	13th	Middlesex v. Somerset 3 days
Wed.	17th	Middlesex v. Essex 3 days
Sat.	20th	M.C.C. v. Club Cricket Conference 1 day
Mon.	22nd	Royal Navy v. Royal Air Force 2 days
Wed.	24th	M.C.C. v. Indian Gymkhana 1 day
Thur.	25th	M.C.C. v. Civil Service 2 days
Sat.	27th	Middlesex v. Surrey 3 days

In addition to Lord's and the Oval, a few county matches are played at the picturesque Blackheath ground (Kent county), in the south-eastern district; and at Ilford (Essex county) on the east side of London.

While you are in England—

**W. H. SMITH
& SON**

can supply all your reading and writing requirements. There are more than 1,500 W. H. SMITH & SON branches, at any of which you can obtain

books, newspapers, magazines and stationery. Nearly 700 of these branches give Lending Library service.



W. H. SMITH & SON, LTD.

NEWSAGENTS BOOKSELLERS LIBRARIANS STATIONERS
BOOKBINDERS PRINTERS AND ADVERTISING AGENTS

**BRANCHES THROUGHOUT
LONDON AND SUBURBS
and all over England and Wales**

Head Office: Strand House, Portugal Street, London, W.C.2

SPORT—*continued.*

DOG RACING

Greyhound racing (with a mechanical hare as quarry) is now immensely popular in this country. The principal meetings in the London district are held at Catford, S.E. ; Clapton, E. ; Harringay, N. ; Stamford Bridge, S.W. ; Wembley, N.W. ; West Ham, E. ; White City, W. ; and Wimbledon, S.W.

FOOTBALL

ASSOCIATION.—The Football League is represented in London by about a dozen professional clubs, and on Saturday afternoons during the season attendances of from 20,000 to 50,000 are attracted to matches held at the grounds of such famous clubs as the Arsenal, at Highbury, N. ; Chelsea, at Stamford Bridge, S.W. ; Tottenham Hotspur, at White Hart Lane, N. ; West Ham, Upton Park, E., and others.

The Final for the English Cup will be played at Wembley Stadium on April 30th.

RUGBY.—The Rugby Union ground at Twickenham (Middlesex) is the venue for international, inter-Services and Oxford *v.* Cambridge matches.

GOLF COURSES NEAR LONDON

Visitors from India will be welcomed as temporary members of the following Clubs. Particulars as to terms, etc., will be supplied upon application to the respective secretaries:—

<i>Name.</i>	<i>Telephone No.</i>	<i>Nearest Station.</i>
BRENT VALLEY, 138, Church Road, W.7	<i>Ealing</i> 1287	Hanwell (S.R.)
CROHAM HURST, S. Croydon ...	<i>Sanderstead</i> 2075	S. Croydon (S.R.)
FINCHLEY, Nether Court, N.W.7	<i>Finchley</i> 4265	Church End (L. & N.E.)
FULWELL, Hampton Hill, Middlesex	<i>Molesey</i> 188	Fulwell (S.R.)
NORTH MIDDLESEX, Manor House, Friern Barnet Lane, N.20	<i>Hillside</i> 1732	Woodside Park (S.R.)
POLLARDS HILL, 145, Pollards Hill, Norbury, S.W.16	<i>Pollards</i> 1563	Norbury (S.R.)
SUDBURY, Bridgewater Road, Wembley, Middlesex	<i>Wembley</i> 0218	Sudbury Town (Dist. Rly.) or Wembley (L.M.S. and Bakerloo)
WIMBLEDON PARK G.C., LTD., Home Park Road, S.W.19	<i>Wimbledon</i> 1250	Wimbledon Park (S.R.)

In addition to the above, there are Public Golf Courses at Addington Court, Addington, Surrey (nearest station East Croydon) ; and Richmond Park, Putney, S.W. (nearest station Barnes).

SPORT—*continued.*
HORSE RACING

Periodical meetings near London are held at Hurst Park, Kempton, Sandown, and Alexandra Palace. At Epsom Downs there is a Spring meeting (in April) and a Summer meeting (the Derby, Oaks, etc.) at the beginning of June. Full particulars of these events (as of all sporting fixtures) are advertised in the sporting columns of the daily Press.

A list of notable racing fixtures in 1938 is given hereunder :—

First Spring Meeting (Newmarket) ...	26, 27, 28, 29 April
Two Thousand Guineas	27 April
One Thousand Guineas	29 April
Chester Cup	4 May
Kempton Jubilee Handicap	7 May
Second Spring Meeting (Newmarket)	10, 11, 12 May
The Derby	1 June
The Oaks	3 June
Ascot	14, 15, 16, 17 June
First July Meeting (Newmarket) ...	28, 29, 30, June, 1 July
Second July Meeting (Newmarket) ...	12, 13, 14 July
Eclipse Stakes	15 July
Goodwood	26, 27, 28, 29 July
St. Leger	7 September
First October Meeting (Newmarket) ...	27, 28, 29, 30 September
Second October Meeting (Newmarket)	11, 12, 13, 14 October
The Cambridgeshire	12 October
Houghton Meeting (Newmarket) ...	25, 26, 27, 28 October
The Cesarewitch	26 October
Manchester November Handicap ...	26 November

LAWN TENNIS

The Championships, which attract competitors from all over the world, are held in June each year on the courts of the All England Lawn Tennis and Croquet Club, Church Road, Wimbledon, S.W.19 (Wimbledon, S.R.); the National Covered Courts Championships at Queen's Club, W.4 (Baron's Court), in October.

WIMBLEDON

Wightman Cup.—Ladies' Match between Great Britain and U.S.A. ...	10 and 11 June
Lawn Tennis Championship Meeting	Fortnight commencing Monday, 20 June

SPORT—*continued.*

In most of the parks controlled by the London municipal authorities, tennis courts are available to members of the public at moderate fees.

Hospitality in the form of temporary membership is offered to visitors from India by the following Clubs. Application should be made to the respective secretaries for particulars regarding terms, etc. :—

BELLINGHAM BOWLING AND L.T. CLUB, Bellingham Road, Catford, S.E.6 (Bellingham, S.R.).

BELMONT HARD COURTS L.T. CLUB, Weigall Road, Lee, S.E.12 (Kidbrooke, S.R.).

DOLLIS HILL ESTATE L.T. CLUB, Cricklewood, N.W.2 (Dollis Hill).

FOREST GATE L.T. CLUB, Nursery Lane, Forest Gate, E. (Forest Gate, L. & N.E.).

ROEHAMPTON HARD COURT TENNIS CLUB, Crestway, Dover House Road, Roehampton, S.W.15 (Putney, S.R.).

STREATHAM COMMON L.T. CLUB, LTD., Tankerville Road, Streatham, S.W.16 (Streatham Common, S.R.).

TREWSBURY HARD TENNIS COURTS, 20 Trewsbury Road, Sydenham, S.E. 26 (Sydenham, S.R.). Professional instruction if desired by Capt. F. D. Rodgers, Kent County L.T.A. coach.

UPPER SYDENHAM L.T. CLUB, Redberry Grove, Sydenham Park Road, S.E.26 (Forest Hill, S.R.).

WOOLWICH AND PLUMSTEAD BOWLING AND TENNIS CLUB, Shrewsbury Lane, Shooter's Hill, S.E. 18 (Plumstead, S.R.).

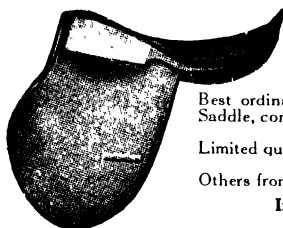
SPEEDWAY RACING

Introduced into this country from Australia in 1928, speedway racing is now firmly established as a popular sport, with League and Cup competitions week by week and occasional international contests. Speeds of 45 to 50 miles an hour are attained on the quarter-mile tracks, and the risks run by the riders provide plenty of thrills for the spectators. Racing takes place at the following London tracks during the season (April to September) :—

Harringay, N.4 ; West Ham, E.16 ; Hackney Wick, N.E.15 ; New Cross, S.E.15 ; Wimbledon, S.W.17 ; and Wembley.



POLO SADDLERY



Best Leather-lined Rugby Panel Polo Saddle
(our own best make), complete with pair of
super stainless steel or super nickel stirrups,
pair of super leathers and
super woollen girths .. £11 11 0

Best ordinary Serge-lined full Panel ditto .. £10 10 0
Saddle, complete as above

Limited quantity do. complete as above .. £9 9 0

Others from £5 10 0

If with Folded Leather Girths, 10/6 extra.

Quotations for all Stable requirements.

GEO. PARKER & SONS

ONLY ADDRESS

(SADDLERS) LTD.

12 Upper St. Martin's Lane, London, W.C.2

Telephone: Temple Bar 1164

Telegrams: "Cavesson Lesquare London."

IF YOU ARE INTERESTED IN

**GRAMOPHONES
and RECORDS**

WHEN IN LONDON CALL AT

**The GRAMOPHONE EXCHANGE, LTD.
121, SHAFTESBURY AVENUE, W.C.2**

(4 doors east of Cambridge Circus.

Telephone: Temple Bar 3007)

Where you can make arrangements to have Records
sent out to you abroad and where everything for the
Gramophone can be obtained.

SPORT—*continued.*

POLO

Polo matches are played during the season at Hurlingham (Putney Bridge), Ranelagh, and Roehampton (omnibuses from Hammersmith station). The Hurlingham Club accepts temporary members (for one year only) on terms which can be ascertained from the Secretary The Hurlingham Club, Fulham, S.W.6.

An Indian Empire Garden Party will be held at Hurlingham on Monday, 4th July, the date of the contest, India *v* The World, for the Indian Princes' Challenge Shield.

POLO AT HURLINGHAM, 1938

Whitney Cup (18 and over)	9 May to 14 May
The Broomhouse Cup	16 May to 21 May
Visitors' Handicap Tournament	23 May to 28 May
Ashton Cup ; Empire (Prince of Wales's) Cup, 1st Tie (Derby Week)	30 May to 4 June
Empire (Prince of Wales's) Cup, Final ; Army <i>v.</i> Hurlingham ; Inter-Regimental Tourna- ment, Ties	6 June (Whit Mon- day) to 11 June
Inter-Regimental Tournament, Ties ; Cham- pion Cup, First Tie (Ascot Week)	13 June to 18 June
Champion Cup	20 June to 25 June
Inter-Regimental Tournament, Semi-Finals ; Inter-Regimental Tournament, Final ...	27 June to 2 July
India <i>v.</i> The World, for Indian Princes' Challenge Shield ; Tyro Challenge Cup (15 and under) ; Inter-University Match, Oxford <i>v.</i> Cambridge	4 July to 9 July
Cicero Cup ; Villavieja Cup (Seniors <i>v.</i> Juniors)	11 July to 16 July
Social Club's Cup	18 July to 23 July

MILITARY TOURNAMENTS, Etc., IN 1938

The Royal Tournament will be held at Olympia from 19th May to 4th June.

The Aldershot Military Tattoo will open on 14th June.

The Northern Command Searchlight Tattoo will take place at Roundhay Park, Leeds, Yorkshire, commencing 8th July.

The Southern Command Tattoo will take place at Tidworth Park on 30th July and August 1st to 6th.

INDIAN RESTAURANTS

Particulars will be found in our advertisement section relating to some of the restaurants which cater especially for the tastes of Indian visitors to London.

LOST PROPERTY

All lost property found in cabs is taken to the Metropolitan Police Lost Property Office, 109 Lambeth Road, S.E.1, where it can be redeemed on payment of 3s. per £ of the value, except in case of jewellery or money, when charge is 3s. 6d. per £. Property over £10 in value is redeemed at a smaller rate. Office Hours 10 to 4; Saturday 1 p.m. Lost property found on railways is taken to the main office of the particular railway company; in the case of Underground railways, buses, trams, trolley-buses, or Green Line coaches to the London Passenger Transport Board Lost Property Office, 200-202 Baker Street, N.W.1. Hours 10 a.m. to 7 p.m. Monday to Friday.

SERVICE DINNERS

Service and other special dinners are held in London every year during the summer.

Information regarding these functions can be obtained from the Enquiry Officer at India House, Aldwych, W.C.2.

AIR TRANSPORT

The air port of London is Croydon Aerodrome, Waddon, Surrey (Waddon, S.R.) (Telephone: Croydon 4422), which is the terminus for internal air services in Great Britain and Ireland, also for traffic between England and the Continent.

Imperial Airways (Terminus, Victoria Station, S.W.1; Telephone: Victoria 2211), the British national air transport company, controls a fleet of 80 air liners and serves four continents and thirty-five countries. It operates daily services from London to Paris; Brussels and Cologne; Vienna and Budapest; and at certain seasons to Basle, Zurich and Le Touquet. There are four services a week from Southampton to India, and two services a week *via* Egypt, Palestine, India, Burma and Siam to Malaya. Also two services a week to Brisbane (Australia) *via* the Netherlands Indies. There are also two services a week from Southampton to Durban (South Africa) and three a week to Kenya (East Africa).

PUBLIC HOLIDAYS

ENGLAND, WALES, IRELAND AND THE CHANNEL ISLANDS

Good Friday, Easter Monday, Whit Monday, First Monday in August, Christmas Day and Boxing Day (25th and 26th December)

SCOTLAND

New Year's Day, First Monday in May and First Monday in August.

POSTAL INFORMATION

LETTER MAILS BY AIR—COUNTRIES OUTSIDE EUROPE

Letters, letter-packets and postcards for the undermentioned countries are despatched by air as the normal means of transmission. The postage rates are 1½d. per HALF ounce for letters and letter-packets and 1d. for postcards. The payment of air postage on letters, letter-packets and postcards for these countries is unnecessary; Air Mail labels or other special markings must not be used, and the letters, letter-packets and postcards should be posted in the ordinary and not the Air Mail letter boxes :—

ADEN	MAURITIUS	SEYCHELLES
BAHREIN	MUSCAT	SOUTH AFRICA
BRUNEI	NORTH BORNEO	SOUTHERN RHODESIA
BURMA	NORTHERN RHODESIA	STRAITS SETTLEMENTS
CEYLON	NYASALAND	SUDAN (Anglo-Egyptian)
DUBAI	PALESTINE	TANGANYIKA TERRITORY
EGYPT	PERSIAN GULF PORTS	TIBET
INDIA (British and French)	(Bahrein, Dubai and Muscat only)	TRANSJORDAN
KENYA	SARAWAK	UGANDA
MALAY STATES (Federated and Unfederated)		ZANZIBAR

Cable rate : To India 1s. 3d. per word, to Ceylon 1s. 2d. per word.

BANKING

Banks in London are open from 9 a.m. until 3.30 p.m., in outer London the closing hour being 3 p.m. (12 noon on Saturdays). Deposits are accepted at branch offices for credit to any other branch. Arrangements can be made for a *temporary* credit balance to be opened at a branch other than the one generally used by the client.

RATE OF EXCHANGE

The approximate rate of exchange is :—

1 Rupee	1s. 6d.
100 Rupees	£7 10s. 0d.

HOTEL and OTHER ACCOMMODATION

The Enquiry Officer at India House, London, keeps for the convenience of visitors a list of suitable hotels and flats.

A list of boarding houses, including the names of families receiving paying guests, is kept by the Accommodation Officer for Students, India House.

LONDON FIRE BRIGADE DISPLAYS

Drill displays to which admission may be had by ticket are given at the Headquarters of the London Fire Brigade, Albert Embankment, S.E.1, every Wednesday afternoon, commencing at 3 p.m. There are selections by the Fire Brigade Band from 2.30 p.m. onwards.

Application for tickets should be made to India House, Aldwych, or, alternatively, to the Chief Officer of the London Fire Brigade, 8 Albert Embankment, S.E.1.

EXPERIMENTAL FARMS AND RESEARCH INSTITUTES

The following are in, or within easy reach of, London :—

<i>Name.</i>	<i>Subject.</i>
Rothamsted Experimental Station, Harpenden, Herts.	Soil problems, Plant Nutrition and Pathology.
Cambridge University Agricultural Research Institutes.	Plant Breeding, Vegetable Growing, Animal Pathology and Nutrition, Small Animal Breeding.
National Institute of Agricultural Botany, Huntingdon Road, Cambridge.	Development of new varieties of crops.
East Malling Research Station, East Malling, Kent.	Fruit Growing and Hops.
Experimental and Research Station, Cheshunt, Herts.	Nursery and Market Garden Crops.
Institute of Agricultural Parasitology, London School of Hygiene and Tropical Medicine, Endsleigh Gardens, N.W.1.	Agricultural Parasitology.
Research Institute in Animal Pathology, Royal Veterinary College, Camden Town, N.W.1.	Animal Pathology.
Research Institute in Animal Pathology, Addlestone, Surrey.	Animal Pathology.
National Institute for Research in Dairying, Shinfield, near Reading, Berks.	—
Oxford University Agricultural Research Institutes.	Agricultural Economics and Engineering.
Research Institute in Plant Physiology, Imperial College of Science, South Kensington, S.W.7.	Plant Physiology.
Imperial Institute of Entomology, British Museum (Natural History), Cromwell Road, S.W.7.	—
Imperial Mycological Institute, Ferry Lane, Kew, Surrey.	—
IMPERIAL BUREAU OF ANIMAL HEALTH, Veterinary Research Laboratory, New Haw, Weybridge, Surrey.	
IMPERIAL BUREAU OF AGRICULTURAL PARASITOLOGY (HELMINTHOLOGY), Institute of Agricultural Parasitology, Winches Farm Drive, Hatfield Road, St. Albans, Herts.	

COMMERCIAL VISITORS

TO

LONDON, HAMBURG AND MILAN

Representatives of Firms or Individuals interested in the sale of Indian Produce and Manufactures in the United Kingdom and on the Continent, who intend visiting London, are invited to call at the offices of

THE INDIAN TRADE COMMISSIONER,
"India House," Aldwych,
LONDON, W.C.2.

Those specially interested in the sale of Indian Produce and Manufactures in the continent of Europe (specially Northern Europe) and who intend visiting Hamburg, are invited to call at the offices of

THE INDIAN TRADE COMMISSIONER,
Neuer Jungfernstieg, No. 9,
HAMBURG, GERMANY.

Those specially interested in the sale of Indian Produce and Manufactures in the continent of Europe (specially Southern Europe) and who intend visiting Milan are invited to call at the offices of

THE INDIAN TRADE COMMISSIONER,
Corso Del Littorio, 1 Bis,
MILAN, ITALY.

If prospective callers or their firms are not already well known to the Indian Trade Commissioners at the above places, the Director-General of Commercial Intelligence and Statistics, 1, Council House Street, Calcutta will be pleased to furnish them with letters of introduction and to advise the Indian Trade Commissioners in advance of the nature of their business in India. Such advance information to the Indian Trade Commissioners in London, Hamburg and Milan, will enable those officers to deal more expeditiously and effectively with the business requirements of visitors from India to those places.

Grindlay & Coy., Limited

BANKERS

**AND INDIA, ARMY, CIVIL SERVICE AND
COLONIAL AGENTS**

(AFFILIATED WITH NATIONAL PROVINCIAL BANK
LIMITED)

54 PARLIAMENT STREET, S.W. 1

Telegraphic Address : "Grindlay, London "

DIRECTORS :

COL. STUART LOW, D.S.O.

SIR AUSTIN LOW, C.I.E. TREVOR J. MATTHEWS

R. MALCOLM DONALD S. CAMPBELL, M.C.

CAPT. G. C. WILKINSON, R.N.

BRANCHES AT

BOMBAY CALCUTTA DELHI SIMLA
NEW DELHI LAHORE QUETTA
PESHAWAR CITY & CANTONMENTS
& KARACHI

and Correspondents in all parts of the world.

ALL KINDS OF BANKING BUSINESS
transacted in London and in India.

PASSAGES booked to all parts of the world,
and all continental travel arranged.

SPECIAL DEPARTMENTS maintained for
effecting insurances, drawing pay and
pensions, income tax, etc.

